

The Bengal

An illustration of
the CFA Standard



ESSENCE OF The Bengal



This breed should be athletic, expressive, and with a uniquely patterned coat.

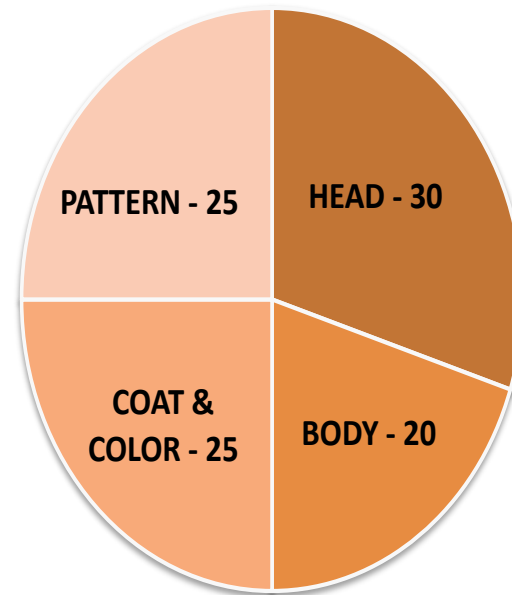
- Body should feel muscular, yet sleek enough to be an athlete.
- The Bengal's face should convey a wild essence through dramatic coloring and large nocturnal eyes.
- The coat of this breed should sport highly contrasted spots, rosettes, or marbling.



POINT BREAKDOWN

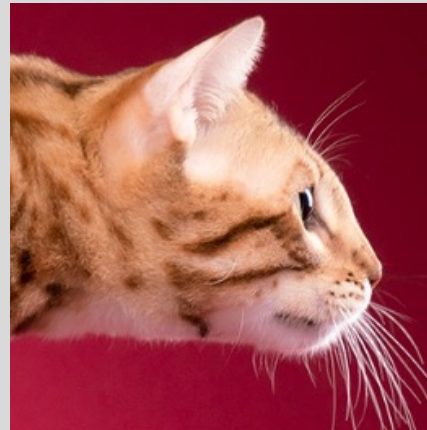


- Half of the points on this breed are on the conformation of the cat.
- The other half make up the 'paint job' or the coat, color & pattern.



HEAD

- Broad modified wedge with rounded contours
- Longer than wide
- Medium to small ears, wide base, tilted forward.
- Slightly small head in proportion to body.
- Gently curved forehead to nose bridge.
- Nose in profile is straight to slightly concave. Wide, puffed nose leather.



BODY

- Long and substantial
- Muscular
- Hindquarters slightly higher than shoulders
- Substantial boning
- Medium long leg
- Large, round paws
- Thick tail with tapered, rounded end and medium length



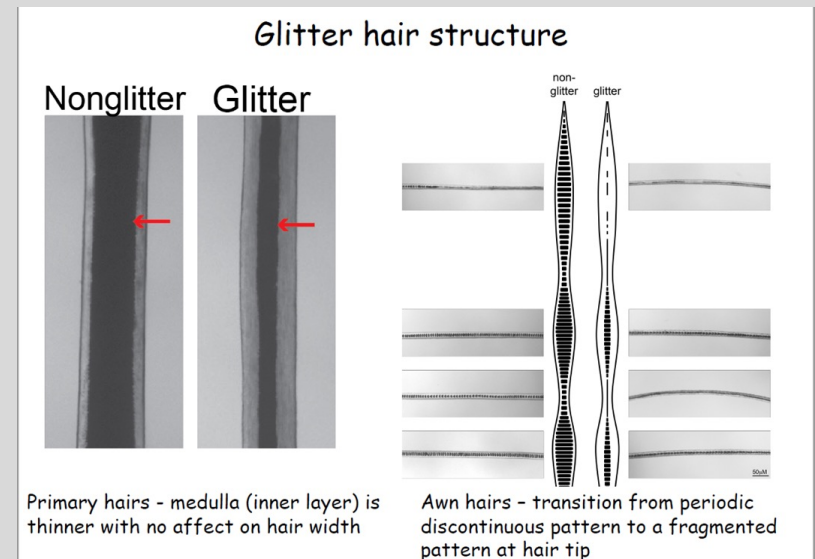
COAT

The Bengal's coat should be short, soft, and luxurious.

May or may not be glittered; this is an iridescent shimmer to the coat caused by air pockets within the hair shaft which causes light to reflect/ refract at hair tips.



Glitter



PATTERN

- Rosetted/ Spotted Tabby Pattern-Should feature horizontal flow to the spots / modified spots known as rosettes.
- Marble Tabby Pattern-This pattern is a modified classic tabby pattern with strong horizontal /diagonal alignment, or pull to the pattern.
- Charcoal Tabby Pattern Effect –This adds a darker overall appearance to the cat, as well as a dark dorsal cape, a facial masking over the cheekbones and nose bridge, and dramatic spectacles encircling the eyes.



COLORS



Summary of colors:

Currently Bengals can be shown in three color classes, there is also an AOV class (which includes longhairs, melanistic and smoke patterns)

- Browns, the traditional color.
- “Snow” or Seal Series including charcoal patterns.
- Other Bengal Colors & Patterns
- Silvers
- “Blues”/Dilutes

PENALIZE / DISQUALIFY



Penalize:

- **Pattern alignment either vertical or circular.**
- **Substantially darker points in seal series cats.**
- **Kinked/ Deformed tails**

Disqualify:

- **Lockets or complete absence of spots on markings on ventral side of cat.**
- **Clearly visible tail kink or tail deformity.**
- **Cow hocking**
- **Crossed eyes**

Bengal

In conclusion...

This breed should fuse a dependable disposition with a stunning coat and a nocturnal expression to create the appearance of a wild feline.

